

National Forum for Seismic Safety Commissions

December 4 and 5, 2024

10:00 AM - 12:30 PM *Alaska* | 11:00 AM - 1:30 PM *Pacific*
12:00 - 2:30 PM *Mountain*
1:00 - 3:30 PM *Central* | 2:00 - 4:30 PM *Eastern*



Welcome!

Before we get started:

- If you have technical issues with Zoom, please email schuback@crew.org to ask for help.
- Please keep your mics muted.
- We'll create a temporary recording of the forum to assist with note-taking; the recording itself won't be published or shared.

Funding was provided by FEMA-National Earthquake Hazards Reduction Program

**National Forum for
Seismic Safety
Commissions**

CREW
Cascadia Region
Earthquake Workgroup



Welcome!



Pascal Schuback
Executive Director
schuback@crew.org



Brian Blake
Executive Director
bblake@cusec.org

crew.org/national-ssc-forum/

Agenda, Day 1

(2 hours, 30 minutes)

- Welcome & Overview
- Meet three commissions
- Discussion
- Break
- Meet three commissions
- Discussion
- Wrap Up & Adjourn

**National Forum for
Seismic Safety
Commissions**

CREW
Cascadia Region
Earthquake Workgroup



How to Participate

- Commission Presentation (up to 10 minutes each, including Q&A)
- Make a comment, contribute a thought, or ask a question:
 - Use the “chat” feature: Open chat by clicking the “chat” icon at the bottom of your screen.
 - Raise your hand to speak: Click “react” icon at the bottom of your screen, then click “raise hand” and wait to be called.

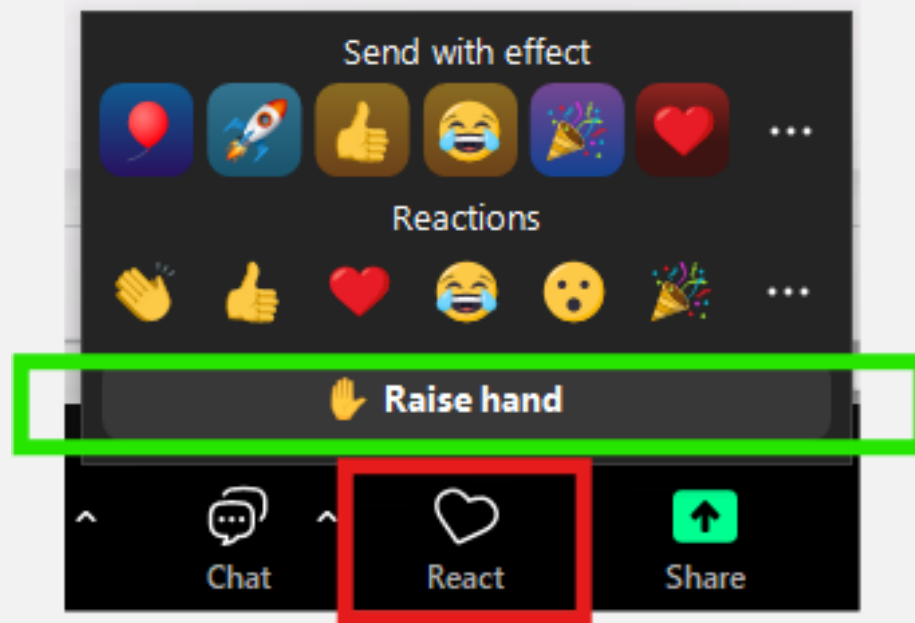
National Forum for
Seismic Safety
Commissions

CREW
Cascadia Region
Earthquake Workgroup



How to Participate

Raise your hand to speak: Click “react” icon at the bottom of your screen, then click “raise hand” and wait to be called.



National Forum for
Seismic Safety
Commissions

CREW
Cascadia Region
Earthquake Workgroup



Who Is Taking Part

- **Alaska** Seismic Hazards Safety Commission
- **Arkansas** Governor's Earthquake Advisory Council
- **Arizona** Council on Earthquake Safety
- **California** Seismic Safety Commission
- **Colorado** Earthquake Hazard Mitigation Council
- **Missouri** Seismic Safety Commission

**National Forum for
Seismic Safety
Commissions**

CREW
Cascadia Region
Earthquake Workgroup



Who Is Taking Part

- **Montana** Earthquake Working Group
- **Oregon** Seismic Safety Policy Advisory Commission
- West **Tennessee** Seismic Safety Commission
- **Utah** Seismic Safety Commission
- **Washington** Seismic Safety Subcommittee

National Forum for
Seismic Safety
Commissions

CREW
Cascadia Region
Earthquake Workgroup



Who Is Taking Part

Supporting partners, including:

- CREW
- CUSEC
- FEMA (National Earthquake Hazards Reduction Program; regional earthquake programs)

**National Forum for
Seismic Safety
Commissions**

CREW
Cascadia Region
Earthquake Workgroup



Up First...

Meet:

- Alaska Seismic Hazards Safety Commission
- Montana Earthquake Working Group
- Washington Seismic Safety Subcommittee

**National Forum for
Seismic Safety
Commissions**

CREW
Cascadia Region
Earthquake Workgroup





ASHSC Alaska Seismic Hazards Safety Commission

<https://seismic.Alaska.gov>

Barrett Salisbury, PhD
Earthquake & Tsunami Hazard Program Manager
Chair, ASHSC
AK DNR Division of Geological & Geophysical Surveys

Dec 3-4, 2024
Cascadia Region Earthquake Workgroup
National Forum on Seismic Safety Commissions

History



- 2002 – the 22nd AK legislature passed (and Gov. Knowles signed into law, eff. 9/29/02) HB53 establishing the ASHSC with 9 members under the Office of the Governor.
- 2003 – Gov. Murkowski issued EO no. 105 transferring the ASHSC to SOA DNR
- 2005 – Gov. Murkowski appointed the first 9 members to the ASHSC, first official meeting on Oct. 28
- 2006 – HB83 was passed, adding two additional “local government” positions for a total of 11 seats with a sunset date of June 30, 2012



Governor Appointed Representatives (11) 3-year terms

- Local Government (3 - Valdez, Palmer, v.)
- Dept. of Military & Veterans Affairs (1 – DHS&EM)
- Insurance Industry (1 – v.)
- Federal Agency (1 - USCG)
- Public/Restricted (3 - experts in geology, seismology, hydrology, Geotech/structural engineering, EM – v.)
- University of Alaska (1 – v.)
- Department of Natural Resources (1 - DGGS)

“The Department of Natural Resources shall provide staff support to the commission”

- admin/budget
- travel
- website

“Serve without compensation but are entitled to per diem and travel expenses...”



The commission shall:

- Recommend goals/priorities for seismic hazard mitigation to public/private sectors
- Recommend policies to the Gov. and Leg., including research, mapping, monitoring
- Offer advice on coordinating disaster preparedness/hazard mitigation
- Gather/analyze/disseminate info of general interest on seismic hazards
- Establish/maintain necessary working relationships with other public/private agencies
- Review predictions/warnings issued by federal gov., research institutions
- Review seismic hazard notifications and recommend that the Gov. issue notifications if appropriate

The commission may:

- Advise the Gov. and Leg. on disaster preparedness/mitigation and on related budgets
- Conduct public hearings
- Appoint committees from its membership/appoint external advisory committees of ex-officio members
- Accept grants, contributions, and appropriations from public/private agencies/individuals

Regular Operations



- Chair/Vice-Chair elected annually, <3-yr stints
 - At least 6 meetings/year, 2 in person (\$10k/yr budget for travel – DGGS GF earmark)
 - Annual reports to Gov. and Leg.
 - Policy Recommendations as needed
 - Periodic legislative audits
 - <https://seismic.Alaska.gov>
-
- Building code adoption and enforcement
 - Resilient critical infrastructure
 - NEHRP ISEA Grant funding: FEMA->DHS&EM->ASHSC



2010 – School Facilities

- 2010-1 - Appropriate resources to ID at-risk schools
- 2010 -2 - Allocate funds for seismic risk mitigation of schools

2011 – Groundwork for seismic safety

- 2011-1 – Development of EQ Research Program
- 2011-2 – EQ Engineering requirements for PE licensure
- 2011-3 – ID and prioritize seismically vulnerable buildings
- 2011-4 – Relief for qualified damaged assessors
- 2011-5 – Investigate impacts of PNW megathrust event (plus supporting paper)

2012-1 – Develop post-EQ technical clearinghouse

2013 – Critical Facilities/Schools

- 2013-1 – Value of seismic instrumentation in critical facilities
- 2013-2 – Seismic provisions for designing public schools/buildings

2014-1 – DGGS earthquake response and field investigation guide

2015 – General repeats/updates to 2011-3, 2010-1,2

- 2015-1 – School design/construction/major renovation
- 2015-2 – ID seismically vulnerable schools
- 2015-3 – ID seismically vulnerable public buildings
- 2015-4 – Develop contingency plans for PNW event (repeat 2011-5)

2019-1 – Adopt and incorporate existing EarthScope stations

2020 – Response to the M7.1 Nov 30, 2018 Anchorage EQ

- 2020-1 – Resilient critical infrastructure
- 2020-2 – Improve building code adoption and enforcement

Montana Earthquake Working Group

- **Core Group/Strategic Plan:** Montana Bureau of Mines and Geology (MBMG), EERI, Montana Disaster and Emergency Services (MT-DES)
- **Interest Group Subcommittees:**
 - **Hazards Research:** MBMG, CalPoly, University of Montana, Montana Department of Transportation
 - **Mitigation Strategies:** MT-DES, Counties, School Districts (Missoula, Helena).
 - **Outreach:** FEMA, MT-DES, School Districts (Missoula, Helena), MBMG, Counties, University of Montana.
- Number of members: 8 official + 7 upcoming new members.
- Annually during the Montana Geohazards Workshop; Quarterly (planned) for each subcommittees
- Mission Statement:

The Montana Earthquake Working Group (MEWG) brings together members from state and government agencies, universities, private sector, and the public tasked in advancing earthquake research, recommending approaches, actions, and developing outreach activities aimed at reducing Montana's earthquake risk.

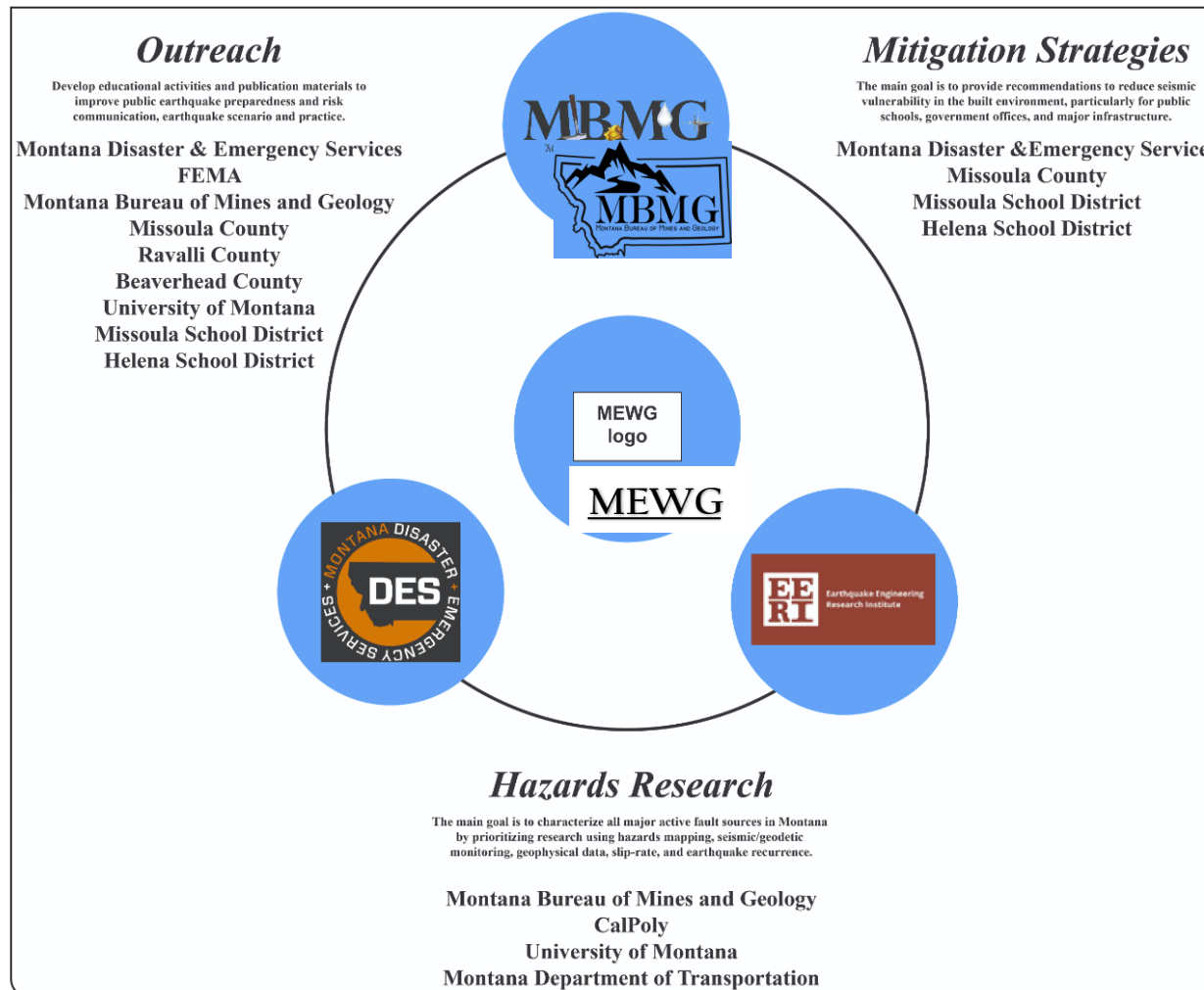
MEWG serves as a source of information for individuals and groups concerned with earthquake safety, promotes earthquake-loss-reduction measures and resilience, develops partnerships, and implements awareness campaigns in order to save lives, prevent injuries, protect property, and reduce social and economic disruption from the effects of earthquake-related activity in Montana.

National Forum for
Seismic Safety
Commissions

CREW
Cascadia Region
Earthquake Workgroup



Montana Earthquake Working Group



National Forum for Seismic Safety Commissions



Montana Earthquake Working Group

- Current members:
 - MBMG
 - EERI
 - MT-DES
 - University of Montana
 - DOT
 - Montana State Library
 - Helena School District
 - Rocky Mountain Lab
- Prospective members:
 - DEQ
 - DNRC
 - Missoula County School District
 - Ravalli County School District
 - Missoula County
 - Lewis and Clark County
 - Beaverhead County
 - Montana Insurance Commissioner
 - MACO
 - Office Indian Affairs
 - Montana Public Service Commission (Jeff Blend)
 - Montana Rail Link
 - Montana Department of Labor and Industry
 - others...

**National Forum for
Seismic Safety
Commissions**

CREW
Cascadia Region
Earthquake Workgroup



Montana Earthquake Working Group

Hazards Research subcommittee (**MBMG***, EERI, DOT, UM): The main goal is to characterize all major active fault sources in Montana by prioritizing research using hazards mapping, seismic/geodetic monitoring, geophysical data, slip-rate, and earthquake recurrence.

Mitigation subcommittee (**DES***, FEMA, EERI, DOT, Schools, Counties): The main goal is provide recommendations to reduce seismic vulnerability in the built environment, particularly for public schools, government offices, and major infrastructure.

Outreach subcommittee (**FEMA***, **DES***, **Schools***, CalPoly, MBMG, Counties): Develop educational activities, outreach, and publication material to improve public earthquake preparedness and risk communication, earthquake scenario and practice.

National Forum for
Seismic Safety
Commissions

CREW
Cascadia Region
Earthquake Workgroup



Montana Earthquake Working Group

Annual Montana Geohazards Workshop



April 28, 2022

Montana Tech – Butte



April 26-28, 2023

Fort Harrison – Helena



May 1-2, 2024

Univ. of Montana – Missoula

MBMG, DES, FEMA, EERI, UM, MDT, MSL, DNRC, DEQ, Missoula County, Lewis and Clark County, Beaverhead County, NOAA, National Security Emergency Preparedness, Rocky Mountain Lab, Bitterroot Irrigation District, Missoula Public Schools, Helena Public Schools, CalPoly, EarthScope, Cascade Region Earthquake Working Group, Resilience Action Partners, Representatives from Tester, Zinke, and Daines offices.

- Present updates from the MBMG Geohazards Program, various state agencies, and research programs.
- Information sessions on regional/local seismic hazards and risks.
- Establishing an Earthquake Working Group and Seismic Safety Commission
- Synergies for collaborative projects and funding opportunities
- Earthquake tabletop exercises, FEMA training courses, and field trips.

**National Forum for
Seismic Safety
Commissions**

CREW
Cascadia Region
Earthquake Workgroup



Montana Earthquake Working Group



BITTERROOT FAULT
Geohazards in the Bitterroot Valley

OCTOBER 17, 2024
6:30 PM

Hamilton
Performing Arts Center
327 Fairgrounds Rd-Hamilton, Montana

Sponsored by:
Ravalli County
Office of Emergency Management

A presentation on the Bitterroot Fault, which runs along the base of the Bitterroot Mountains, including historical activity, current research, and the future of this fault. Presenters will include Montana Bureau of Mines & Geology researchers as well as representatives from local agencies.

RAVALLI COUNTY OFFICE OF EMERGENCY MANAGEMENT oemerc.mt.gov
ravalli.us/241/Emergency-Management

School inventory for seismic retrofit



Helena Public Schools
A great place to learn




HAGERTY




FEMA


National Forum for Seismic Safety Commissions



CREW
Cascadia Region Earthquake Workgroup



WESTERN U.S. EARTHQUAKE COMMISSION
CALIFORNIA • IDAHO • MONTANA • NEVADA • OREGON • WASHINGTON • WYOMING



nehrp

Washington

Seismic Safety Sub-Committee

- Reports to Emergency Management Council
- 16 core organizations; 0-15 additional key partners
- Quarterly meetings (usually)
- Mission:
 - Advises the Governor through the Emergency Management Council on all matters pertaining to seismic resilience in Washington

National Forum for
Seismic Safety
Commissions

CREW
Cascadia Region
Earthquake Workgroup



Washington

Seismic Safety Sub-Committee

Present Workgroups:

- Unreinforced Masonry Inventory and Mitigation
- School Seismic Safety

Key challenges

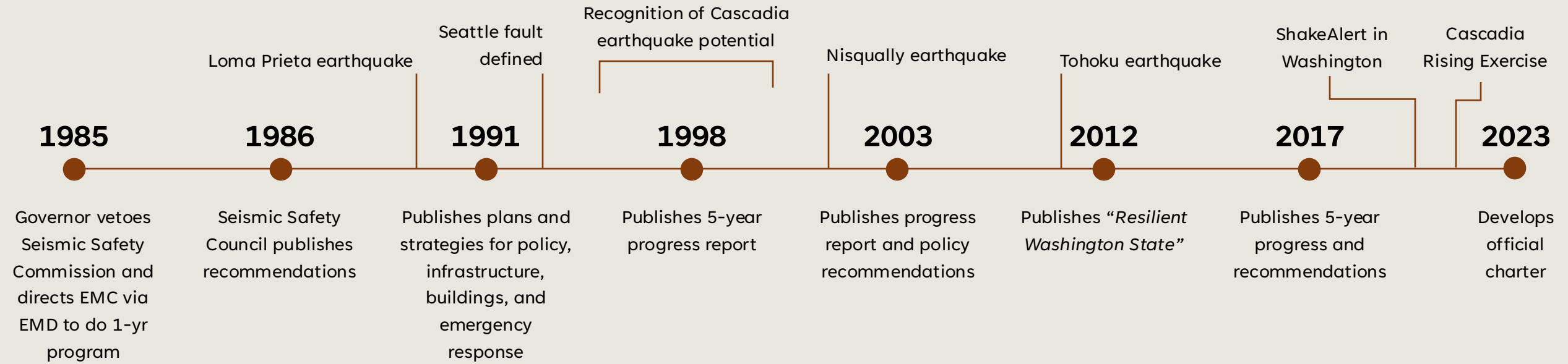
- Slow progress
- Organizational structure (is anyone listening?)

National Forum for
Seismic Safety
Commissions

CREW
Cascadia Region
Earthquake Workgroup



SEISMIC SAFETY SUB-COMMITTEE



Discussion

Facilitator: Barrett Salisbury, Alaska

How do we affect change? For example:

- How can a seismic safety commission make the jump from making recommendations to moving legislators?
- What strategies for educating the public could help?
- What role could incentive programs for individuals or businesses play?
- What can we learn from parallels or partnerships with other “change-based” programs like resilient energy-efficient construction?
- Where can we find funding to support these efforts?
- How can a seismic safety commission affect change after an earthquake?

National Forum for
Seismic Safety
Commissions

CREW
Cascadia Region
Earthquake Workgroup



Break

National Forum for Seismic Safety Commissions

December 4 and 5, 2024

10:00 AM - 12:30 PM *Alaska* | 11:00 AM - 1:30 PM *Pacific*

12:00 - 2:30 PM *Mountain*

1:00 - 3:30 PM *Central* | 2:00 - 4:30 PM *Eastern*



Up First...

Meet:

- California Seismic Safety Commission
- Utah Seismic Safety Commission

**National Forum for
Seismic Safety
Commissions**

CREW
Cascadia Region
Earthquake Workgroup





Cal OES
GOVERNOR'S OFFICE
OF EMERGENCY SERVICES

Alfred E. Alquist Seismic Safety Commission

Seismic Safety Commission

- Annde Ewertsen, Executive Director
Annde.Ewertsen@caloes.ca.gov



MEMBERSHIP

- Established in 1975 by Law, reorganized by AB100 in 2020
- Meets Quarterly
- **10 Appointed by the Governor:**
 - Local Government
 - Social Services
 - Public Utility
 - Planning (vacant)
 - Insurance (vacant)
 - Structural Engineer
 - Fire Protection
 - Emergency Services
- **2 State Legislature:**
 - Senate
 - Assembly
- **4 State Agencies:**
 - Building Standards Commission (Building Codes)
 - State Architect (Schools)
 - California Governor's Office of Emergency Services



- **Mission Statement**

- We improve the seismic safety and resiliency of California communities by providing resources and guidance, facilitating research, and fostering collaboration in earthquake preparedness, mitigation, and recovery.

- **Vision Statement**

- A California that is prepared for, safe from, and resilient to seismic hazards.

WHAT WE DO

- We aspire to guide policies, educate, support research, and foster collaboration to protect lives, property, and the built environment from seismic hazards.
- The Seismic Safety Commission (SSC) investigates earthquakes, researches earthquake-related issues and reports, and recommends to the Governor and Legislature policies and programs needed to reduce earthquake risk.
- Providing a consistent policy direction for earthquake-related programs for agencies at all government levels
- Reviewing seismic activities funded by the State
- Reviewing earthquake-related legislation
- Recommending earthquake safety programs to governmental agencies and the private sector
- Investigating and evaluating earthquake damage and reconstruction efforts following damaging earthquakes
- Conducting public hearings on seismic safety issues

Collaboration



- Earthquake Engineering Research Institute (EERI)- Public Policy Committee
- CA Earthquake Clearinghouse
- FEMA working groups (including BCA Critical Infrastructure)
- SCEC and ECA
- ShakeAlert Technical Users Coordinating Committee
- Structural Engineering Association of CA – Resilience and Seismology Committees
- Electric Power Research Institute: Inner Utility Working Group (IUWG)
- California Building Officials Structural Code Committee (CALBO)

Advisory Roles



- Building Code Development
- California Public Utilities Commission (CPUC) Independent Peer Review Panel
- California Strong Motion Instrumentation Program (CSMIP)
- State Historical Building Safety Board
- Global Earthquake Model (GEM) San Francisco Public Utilities Commission (SFPUC) Water System Improvement Program – Seismic Review

Projects



- Ferndale Earthquake Sequence: Understanding Impediments to Local Recovery in Rio Dell
- Lessons from Historical Earthquakes
- Regional Scale Consequence Assessment of Earthquake Sequence Scenarios in California
- IN-CORE Resilience Model Project
- Fire Station Vulnerability Inventory
- Quake Heroes Expos
- Shake Table Test & UAV Project
- Earthquakes and Climate Change Workshop
- Reducing Post-Earthquake Ignitions Study
- FEMA BRIC – Mobile Home Building Code Project

Ferndale Earthquake Sequence: Understanding Impediments to Local Recovery in Rio Dell



Ferndale Earthquake Sequence: Understanding Impediments to Local Recovery in Rio Dell, California



CALIFORNIA SEISMIC SAFETY COMMISSION
SSC No. 24-02

April 11, 2024

Ferndale & Türkiye Project (Parts 1 and 2)

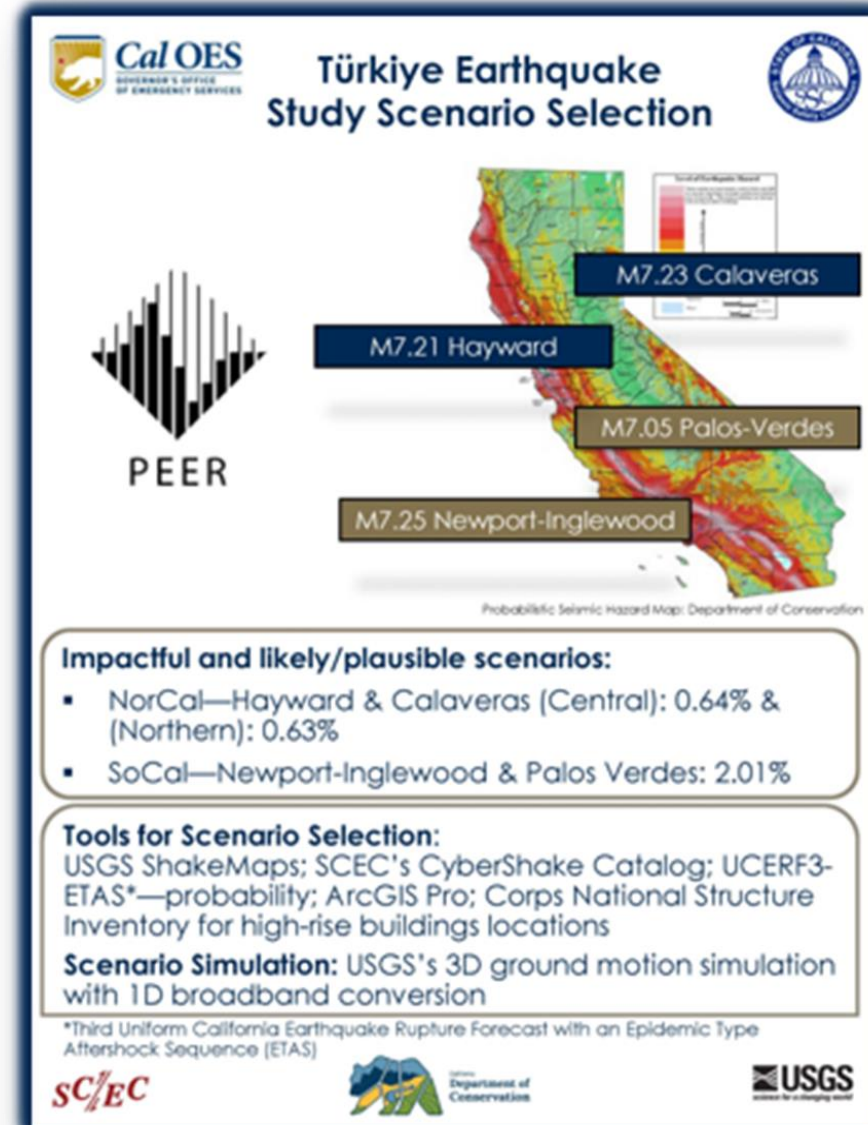


- **Part 1:** Lessons from Historical Earthquakes
- **Part 2:** Regional Scale Consequence Assessment of Earthquake Sequence Scenarios in California

Part 2: Regional Scales Consequence Assessment of Earthquake Sequence Scenarios in California

Doublet Scenarios

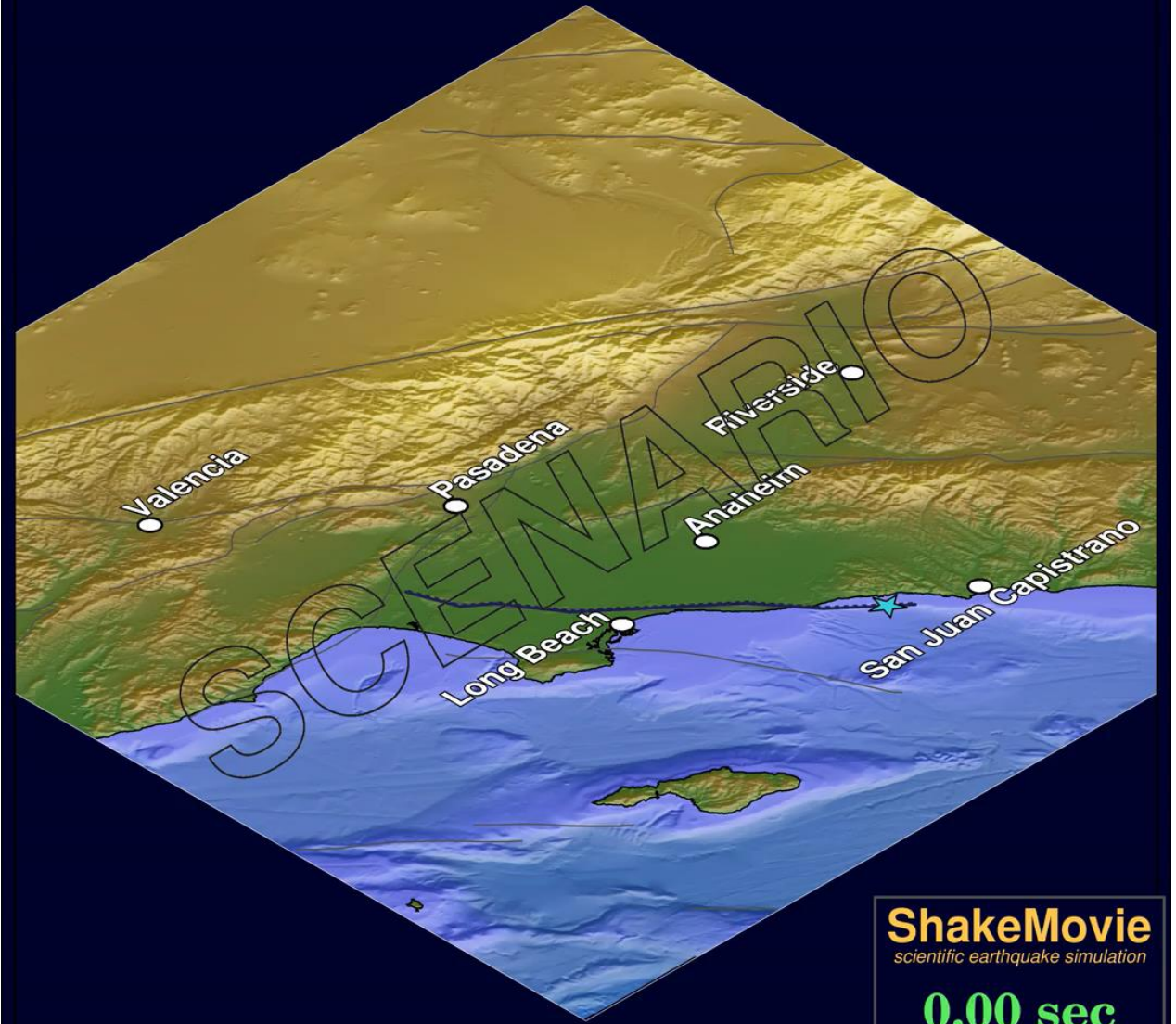
- Building Damages
- Economic Loss
- Casualties
- Power grid
- Healthcare



Southern California Doublet



Newport-Inglewood Fault – M7.25



ShakeMovie
scientific earthquake simulation

0.00 sec

Shaking Intensity

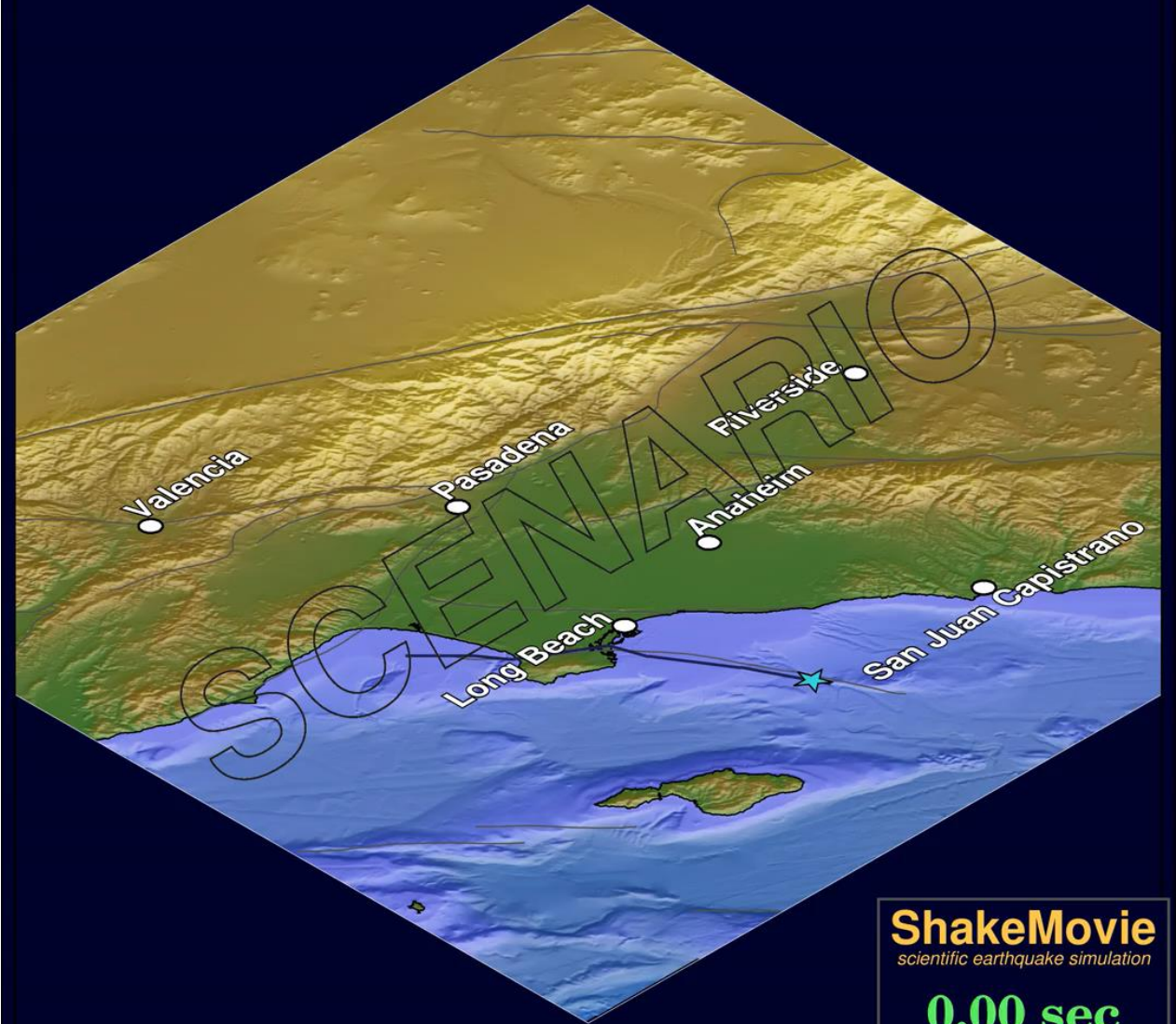
light severe



Southern California Doublet



Palos Verdes Fault – M7.05



ShakeMovie
scientific earthquake simulation

0.00 sec

Shaking Intensity



- **Resilience & Recovery**
- **Project Scenarios**



- **Purpose:** Model communities impacted by earthquakes and provide technical qualifications for similar scenarios (No federal aid, immediate aid, delayed aid).
- 3 cities: Rio Dell, East Richmond Heights, and Monte Sereno
- Provides a means to better understand the socio-economic disparities between communities and embedded in current federal regulations.



IN-CORE (Interdependent Networked Community Resilience Modeling Environment)

Fire Station Seismic Vulnerability Inventory



Purpose: Understand the structural and non-structural seismic vulnerability of the state-wide fire stations and assist stations in learning more about funding for retrofiting.

- Survey
 - To date, 1,131 of 3,200 fire stations responded
- Inventory of fire stations—1986 Essential Services Act
- Risk Assessment of HAZUS data inputs
- Provide data to fire stations for funding assistance

Quake Heroes Expos



- **Purpose:** Commemorate the Jan. 17, 1994, Northridge earthquake 30th anniversary
- Statewide California Earthquake Center (SCEC) leading year-long educational campaign
- With funding from the SSC, SCEC will conduct at least 10 Quake Heroes Expos in underserved communities
- Dubbing film into Spanish and Chinese

NORTHRIDGE *30*
1994  2024

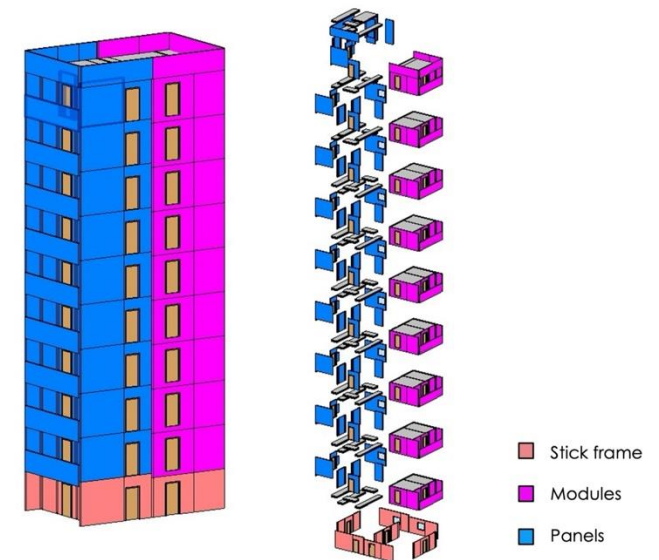
• Shake Table Test & UAV Project



- **Purpose:** Research performance in modeled EQ.
- Cold-Formed Steel Structure (CFSS) on Shake Table
- Earthquake testing in late April-May 2025, followed by live-fire tests in Summer 2025



J. Zhang (2023)
(AutoCAD 3D Rendering)



D. Rivera (2024)
(Revit BIM Model)

Earthquakes and Climate Change Workshop



- **Purpose:** Share information amongst the scientific community and other stakeholders to identify available research and knowledge gaps.
- **Scheduled:** March 4 & 5, 2025



• Reducing Post-Earthquake Ignitions



- **Purpose:** Collect data and create resources to help reduce post-earthquake ignitions to protect public safety and reduce losses.
- Overlay seismicity and building inventory for the southern California study area
 - Model the number and distribution of earthquake-caused ignitions and firespread, with and without Seismic Gas Safety Devices (SGSDs), considering fire and water response.
- Identify regions where SGSDs are cost-beneficial
- Create maps and GIS database for use by state and local jurisdictions.

• FEMA BRIC - Mobile Home Building Code Project



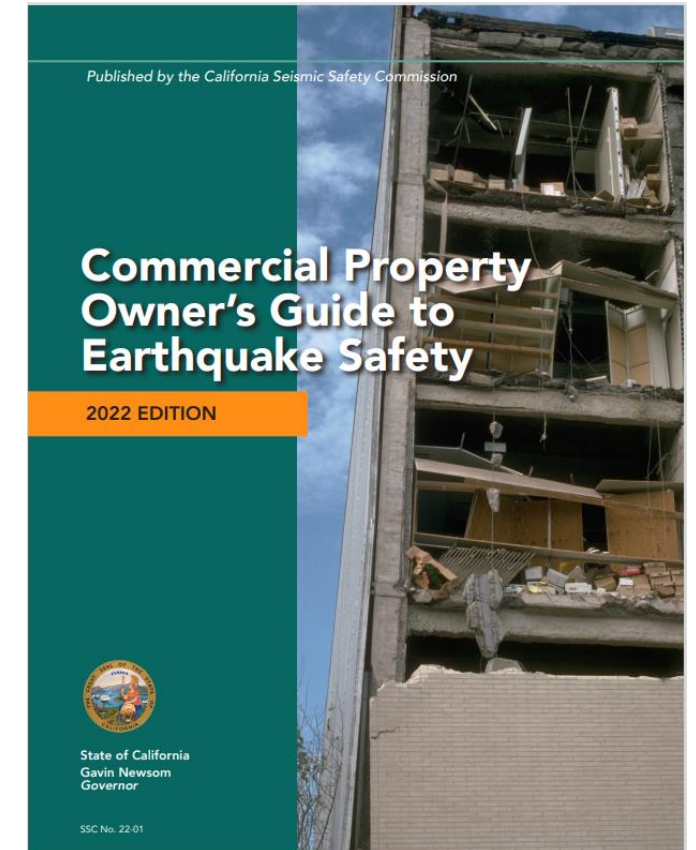
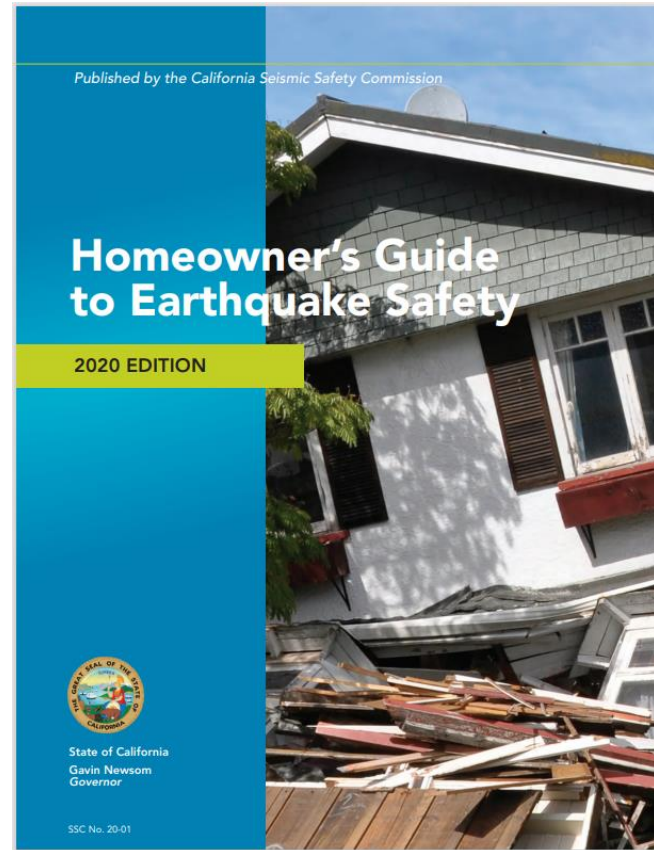
- **Purpose:** Review current State codes and the performance of manufactured housing (MH)
- FEMA's Building Resilient Infrastructure and Communities (BRIC) Building Code Plus-Up Program (\$450k grant approved)
- Recommend updates and development of new construction and design standards and codes for lateral bracing for existing and new manufactured homes.
- MH suffer a disproportionate share of damage and occupants are more likely to have difficulty financially recovering from the damage.

• Recent Publications

- https://ssc.ca.gov/forms_pubs/



- **Homeowner's and Commercial Property Owner's Guide**
 - Available in English and Spanish



Outsmart Disaster, a Statewide preparedness initiative aims to equip all Californians with the tools they need to be resilient in the face of natural disasters. <https://outsmartdisaster.caloesba.ca.gov>

Seismic Safety Commission

- **Questions?**
- Thank you for the opportunity to speak with you today.
- Annde.Ewertsen@caloes.ca.gov



Utah

Utah Seismic Safety Commission

- Authorized by Utah legislative statute 63C-6-101
- 15 volunteer members
- Staffed by the Utah Geological Survey and Utah Division of Emergency Management
- Quarterly meetings
- Advises the Utah legislature, governor, state and local governmental agencies, and the private sector on earthquake safety issues.



National Forum for
Seismic Safety
Commissions



NON-GOVERNMENTAL ORGANIZATIONS




Envision Utah
Non-profit organization which brings business, government, and community organizations together for future growth and planning

ENVISION UTAH




ASCE
AMERICAN SOCIETY OF CIVIL ENGINEERS
UTAH SECTION CIVIL & GEOTECHNICAL ENGINEERING

ASCE members design and build the public and private infrastructure, including roads, bridges and utilities which will be critical to the State and local governments, as well as citizens, after a damaging earthquake.




STRUCTURAL ENGINEERS ASSOCIATION OF UTAH

SEAU promotes technical expertise, professional development, and ethics within the profession. They advocate for legislation and codes to support best practices in building design and construction to improve the safety of the built environment.




APWA Utah Chapter
AMERICAN PUBLIC WORKS ASSOCIATION

APWA helps maintain and develop safe and effective Public Works services, and provides public works professionals an opportunity of leadership and professional education



AIA
THE AMERICAN INSTITUTE OF ARCHITECTS

AIA's Disaster Assistance Program trains architects to help communities mitigate, prepare for, respond to, and recover from disasters, aligning their disaster-response processes, protocols, and training with federal frameworks.



ULCT
UTAH LEAGUE OF CITIES AND TOWNS


ULCT is a nonpartisan, interlocal cooperative working to strengthen the quality of municipal government and administration in Utah's cities and towns

SCIENTIFIC ORGANIZATIONS



UTAH GEOLOGICAL SURVEY

Provides technical scientific information regarding Utah's earthquake hazard. Supports the USSC through staff input and technical services.



UNIVERSITY OF UTAH SEISMOGRAPH STATIONS
THE UNIVERSITY OF UTAH

Operates a large network of seismograph stations throughout the state of Utah and helps reduce the risk from earthquakes in Utah through research, education, and public service.



USU EARTHQUAKE ENGINEERING RESEARCH CENTER

Conducts cutting edge earthquake engineering research and implements findings into practice with a goal of increasing Utah's earthquake resiliency.



Utah Seismic Safety Commission
SEISMIC POLICY AND PUBLIC OUTREACH



STAFF SUPPORTING USSC



FEDERAL EX-OFFICIO ORGANIZATIONS

FEMA USGS
science for a changing world

GOVERNMENTAL ORGANIZATIONS



UTAH DEPARTMENT OF TRANSPORTATION

Operates Utah's transportation networks, and is tasked with keeping networks operating after a damaging earthquake



GOVERNORS OFFICE OF PLANNING AND BUDGET

The Governor's Office of Planning and Budget brings a unique perspective, providing a focus on long-term and strategic planning, interagency and local government coordination, and a consideration of budgetary and policy implications.




UTAH DIVISION OF FACILITIES AND CONSTRUCTION MANAGEMENT

DFCM manages the design and construction of public buildings which are critical to state and local governments, as well as citizens, after a damaging earthquake.



UTAH INSURANCE DEPARTMENT

Seeks to provide Utah consumers with education and information about the insurance products that can assist with financial recovery from an earthquake.



UTAH DIVISION OF EMERGENCY MANAGEMENT

DEM coordinates emergency management efforts among state, local, and federal government entities.



UTAH STATE BOARD OF EDUCATION

USBE oversees Utah's public school system, providing licensing and policy for educators in Utah.

National Forum for Seismic Safety Commissions



Utah Seismic Safety Commission

USSC's Mission:

- Review earthquake-related hazards and risks to the State of Utah and its inhabitants.
- Prepare recommendations to identify and mitigate those hazards and risks.
- Prioritize recommendations and present and promote them to state and local governments for adoption as policy or loss reduction measures.
- Act as a source of information with those concerned with earthquake safety.
- Act as a promoter of earthquake loss reduction measures and legislation.
- Periodically update a strategic seismic planning document that helps monitor the progress toward achieving the goal of seismic risk reduction in the state of Utah.



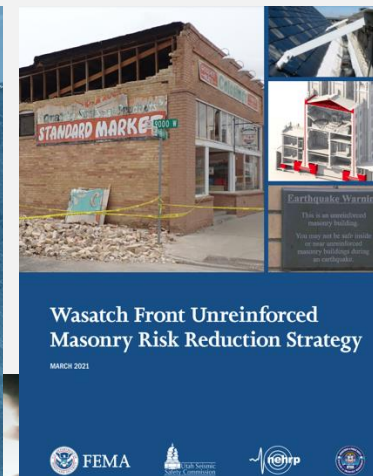
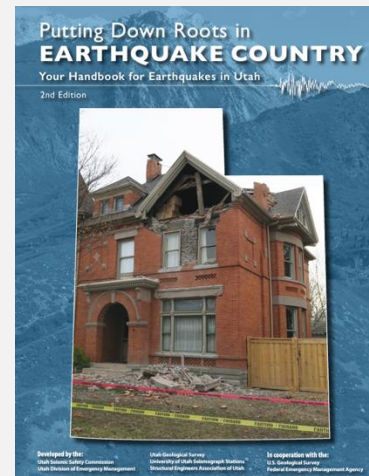
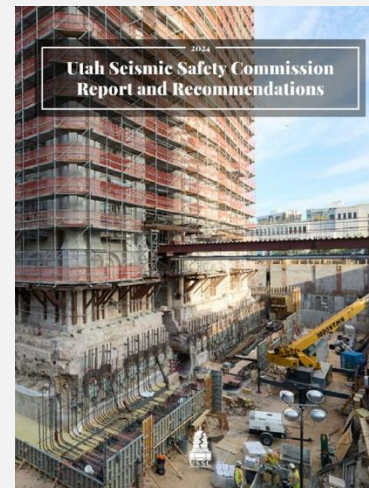
National Forum for
Seismic Safety
Commissions

CREW
Cascadia Region
Earthquake Workgroup



USSC's Projects/Reports:

- Yearly Report and Recommendations to the Utah Legislature
- Utah K-12 Public Schools URM Inventory
- Mitigation Endorsement Report for Utah's URM Schools
- Putting Down Roots in Earthquake Country, 2nd Edition (English & Spanish)
- Wasatch Front URM Risk Reduction Strategy
- Earthquakes.Utah.gov Website



National Forum for Seismic Safety Commissions

CREW
Cascadia Region
Earthquake Workgroup

NATIONAL EARTHQUAKE COUNCIL
UNIVERSITY OF CALIFORNIA - SANTA BARBARA
NATIONAL EARTHQUAKE HAZARD REDUCTION PROGRAM

nehrp

Utah Seismic Safety Commission

USSC's Future:

- Utah Legislature voted to sunset the USSC in the 2024 session – effective January 1, 2025
- Currently working on alternative pathways to keeping the commission active past the sunset date
- Possibly moving the USSC to an executive branch agency, such as Utah DNR or DEM



National Forum for
Seismic Safety
Commissions

CREW
Cascadia Region
Earthquake Workgroup



Discussion

Facilitator: Jeri Young Ben-Horin, Arizona

What are common pitfalls and hot-button issues?

For example:

- How do we successfully address and navigate opposition to our work so that we can fulfill our mission?
- Where does the opposition come from and what is motivating it?

National Forum for
Seismic Safety
Commissions

CREW
Cascadia Region
Earthquake Workgroup



Join Us Tomorrow!

National Forum for Seismic Safety Commissions

December 4 and 5, 2024

10:00 AM - 12:30 PM *Alaska* | 11:00 AM - 1:30 PM *Pacific*

12:00 - 2:30 PM *Mountain*

1:00 - 3:30 PM *Central* | 2:00 - 4:30 PM *Eastern*

